



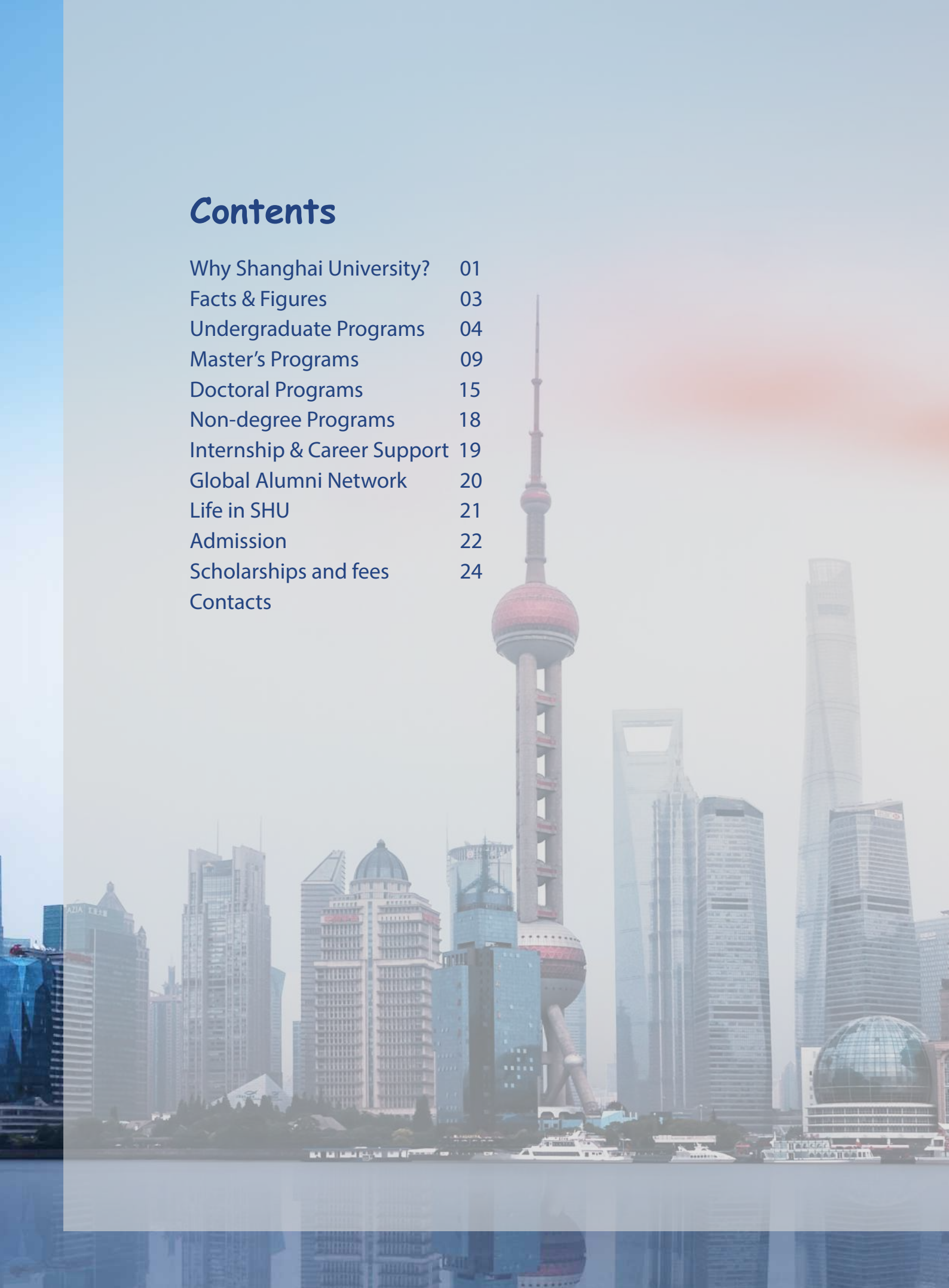
2022

**Admission
Prospectus**

SHANGHAI UNIVERSITY

Contents

Why Shanghai University?	01
Facts & Figures	03
Undergraduate Programs	04
Master's Programs	09
Doctoral Programs	15
Non-degree Programs	18
Internship & Career Support	19
Global Alumni Network	20
Life in SHU	21
Admission	22
Scholarships and fees	24
Contacts	



Why Shanghai University?

A glorious city

City characters: openness, innovation, inclusiveness

The most international city in China

The best commercial city in China by Forbes

Ranked 3rd in the 2020 edition of the Global Financial Centers Index

Ranked as Alpha + city in 2020 by Globalization and World Cities Research Network

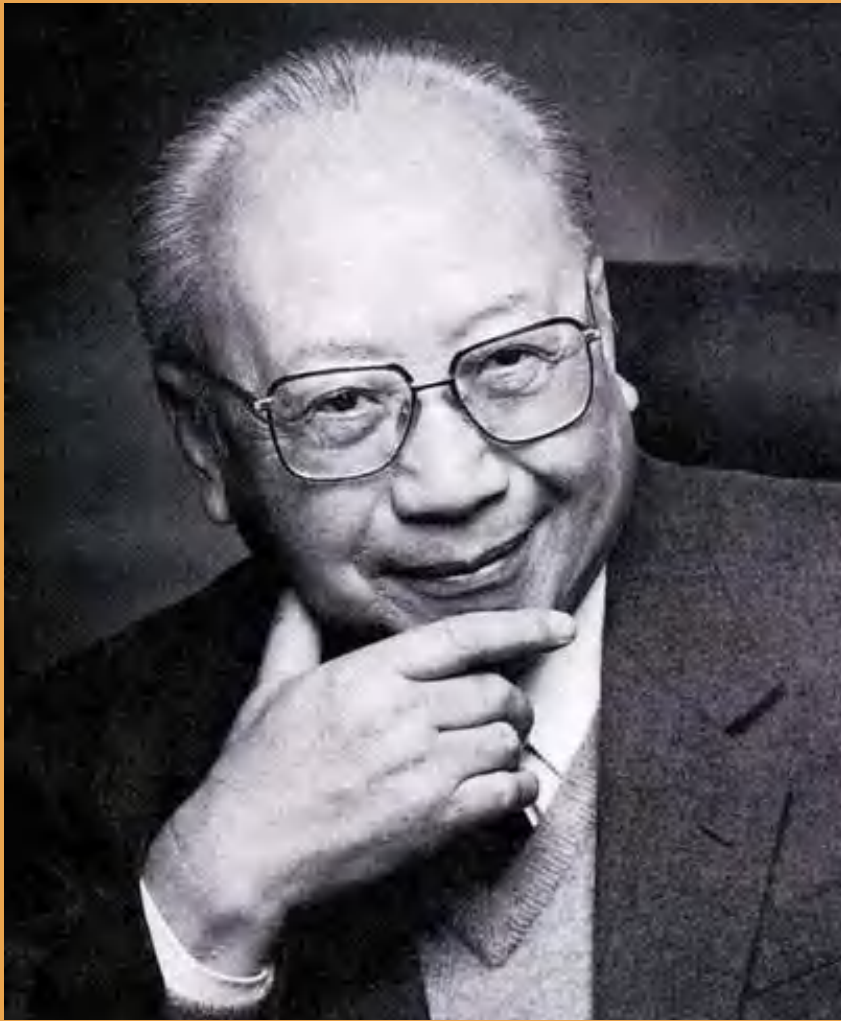
A dynamic university

In the name of the city

A member university of the Project 211

Co-sponsored by the Ministry of education and Shanghai Municipality

Research-oriented with 10 world top 1% disciplines by ESI (2021): Physics, Chemistry, Materials Science, Environmental Ecology, Mathematics, Computer Science, Biology & Biochemistry, Social Science, Engineering and Science, Clinical medicine .



“*To cultivate talents with global vision, citizenship consciousness, humanity mindset, innovative spirit and practical abilities to meet future challenges of the society and achieve the core values of university in accordance with international first-class standards.*”

---- *Former President Qian Weichang,
the distinguished Chinese educator and scientist.*



Ranking

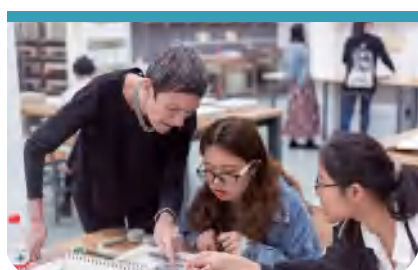
16th among university in mainland China from QS World University Ranking 2021
1st among the Chinese first-class disciplines construction universities in 2019.

Founded in 1922



3 Campus

- Baoshan Campus
- Yanchang Campus
- Jiading Campus



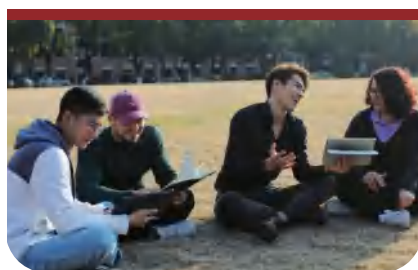
Faculty 3299

Academicians	6 (Chinese) 16 (International)
Professors	760
Associate professors	1107



Students 40000+

Undergraduates	19989
Postgraduates	16581
International students	3301



Colleges 30



Programs

Undergraduate Programs	94
Graduate Programs	221
Doctoral Programs	117

UNDERGRADUATE PROGRAMS



General Education:

Core curriculums with different fields of study

Mentorship systems with self-access and exploring Learning Experiential education with a richly innovative way of life

Academic Credit System Quarter System:

Four quarters in a year (fall, winter, spring, summer)

10 weeks long plus two weeks for finals (except 4-week summer term)

APPLICATION ELIGIBILITY

Non-Chinese citizen in good health with a valid passport

High school graduation with good academic records (be prior to the admission date)

For programs taught in Chinese:

HSK 4 above 180 for Chinese Language(BA),and

Teaching Chinese to speakers of other Languages(BA);

HSK 5 above 180 for Science or Engineering;

HSK 5 above 180 for Economics or Management;

HSK 5 above 210 for Humanities.

For programs taught in English: students from non-English speaking countries are required to pass IELTS 6.5 or TOEFL IBT90.

Popular Majors



Chinese Language for International students

This program meets the trend of globalization and is designed to help students to build a solid foundation of Chinese language, develop high-level Chinese communication ability, and have a deep understanding of Chinese history and culture. Graduates can be engaged in areas such as translation, Chinese language teaching, cultural exchange or other related fields.

Core Courses: Primary Chinese, Intermediate Chinese, Advanced Chinese, Overview of China, Chinese literature, Topic on Contemporary China, ancient Chinese

International Economics & Trade (Taught in Chinese or English)

This program is established on the fundamental economics and emphasizes on the theories and policies of international economics, international trade, and overseas investment in the global economy, as well as on the operation of international trade and overseas investment in real world practices .

Core Courses: Macroeconomics, Microeconomics, International Finance, International Marketing, International Trade, History of Chinese Foreign Trade



Business Administration (Taught in Chinese or English)

Our students will be suitable for all kinds of enterprises engaged in marketing, marketing management, senior international corporate marketing and global marketing.

Core Courses: Principles of Management, Principles of Marketing, Global Marketing, Microeconomics, and Macroeconomics. Sales and Customer Relationship Management.

■ Telecommunication Engineering

This program aims to cultivate students who specialize in the field of wired communications, wireless communication, optical fiber communication and information processing. It helps students to build solid theory knowledge system and develop outstanding practical abilities as well.

Core Courses: Circuit and electronic circuit, signal and system, digital logic circuit analysis and design, communication electronic circuit, digital signal processing



■ Architecture (Arts)

This program helps students to develop a solid knowledge of architectural design, urban planning, interior design, as well as cultivate the comprehensive skills in the field of projects planning, artistic creation and construction drawing design.

Core Courses: Theory of architectural design, The Chinese and foreign history of architecture, principles of urban planning, building structure.

■ Digital Media Arts

This program is to cultivate talents with high artistic accomplishment, solid basic skills and interdisciplinary knowledge. Students can be engaged in the digital media art, network media, and other fields of design, such as planning management, education and training.

Core Courses: Introduction to digital media art, digital plane and three-dimensional structure, computer graphics, multimedia network technology, video effects and nonlinear editing, basic program design.



List of Undergraduate Programs

ENGINEERING

School of Computer Engineering & Science

<http://cs.shu.edu.cn>

- ◇ Computer Science & Technology
- ◇ Intelligent Science and Technology

School of Materials Science and Engineering

<http://www.mat.shu.edu.cn>

- ◇ Material Physics
- ◇ Metallurgy Engineering
- ◇ Metallic Materials Engineering
- ◇ Inorganic Nonmetallic Materials Engineering
- ◇ Polymer Materials & Engineering
- ◇ Electronic Science & Technology

School of Communications and Information Engineering

<http://scie.shu.edu.cn>

- ◇ Electronic Information Engineering
- ◇ Telecommunications Engineering
- ◇ Optoelectronic information science and Engineering

School of Mechatronic Engineering and Automation

<http://www.auto.shu.edu.cn>

- ◇ Mechanical Engineering
- ◇ Robot Engineering
- ◇ Mechatronic Engineering
- ◇ Intelligent Manufacturing Engineering
- ◇ Industrial Design
- ◇ Instruments & Science Technology
(English instruction is available)
- ◇ Electrical Engineering & Automation
- ◇ Automation
- ◇ Packaging Engineering
- ◇ Industrial Engineering

School of Environmental and Chemical Engineering

<http://ece.shu.edu.cn>

- ◇ Chemical Engineering & Technology
- ◇ Environmental Engineering

School of Mechanics and Engineering Science

<http://www.ce.shu.edu.cn>

- ◇ Civil Engineering

HUMANITY & SOCIAL SCIENCE

College of Liberal Arts

<http://cla.shu.edu.cn>

- ◇ Chinese Language and Literature
- ◇ Teaching Chinese to Speakers of Other Languages
- ◇ History

Law School

<http://www.law.shu.edu.cn>

- ◇ Law
- ◇ Intellectual Property

School of Social Sciences

<http://www.shkxy.shu.edu.cn>

- ◇ Philosophy

School of Journalism and Communication

- ◇ Journalism
- ◇ Broadcast & TV Journalism
- ◇ Advertising
- ◇ Network and New Media
- ◇ Exhibition

BUSINESS & MANAGEMENT

School of Management

<http://www.ms.shu.edu.cn>

- ◇ Business Administration
- ◇ Human Resource Management
- ◇ Logistics Management

Department of Library, Information and Archives

<http://www.tqd.shu.edu.cn>

- ◇ Information Resources Management
- ◇ Archive Science

School of Economics

<http://www.soe.shu.edu.cn>

- ◇ Economics
- ◇ Finance
- ◇ International Economics & Trade

ARTS

Shanghai Academy of Fine Arts

<http://www.arts.shu.edu.cn>

- ◇ Architecture Arts (5 years)
- ◇ Urban and Rural Planning(5 years)
- ◇ Fine Arts
- ◇ Painting(oil painting & print painting)
- ◇ Sculpture (5 years)
- ◇ Visual Communication Design
- ◇ Environmental Design
- ◇ Digital Media Arts
- ◇ Chinese Painting
- ◇ Art and Technology

Shanghai Film Academy

<http://www.suftv.shu.edu.cn>

- ◇ Digital Media Technology
- ◇ Film-Making
- ◇ Radio & Television Editing & Directing
- ◇ Animation
- ◇ Literature of Theatre Film & Television

Music School

<http://www.music.shu.edu.cn>

- ◇ Music Performing

SILC Business School

<http://www.silc.shu.edu.cn>

- ◇ Business Administration(Digital Marketing) (Taught in English)
- ◇ International Economics & Trade (Cross-Border Commerce Taught in English)
- ◇ Finance (Corporate Finance Taught in English)
- ◇ Business Administration(Innovation and Entrepreneurship Taught in English)

International undergraduate students studying at SILC have the chance to get double degrees, a Bachelor's degree from Shanghai University and a second Bachelor's degree from the University of Technology Sydney. For more information, please contact admission.silc@oa.shu.edu.cn.

SCIENCE

College of Science

<http://www.scicol.shu.edu.cn>

- ◇ Mathematics & Applied Mathematics
- ◇ Information & Computing Science
- ◇ Applied Physics
- ◇ Applied Chemistry
- ◇ Electronic Information Science & Technology

School of Life Sciences

<http://www.bio.shu.edu.cn>

- ◇ Food Science & Engineering
- ◇ Biological engineering
- ◇ Biological Pharmacy

OTHERS

College of International Education

<http://www.cie.shu.edu.cn>

- ◇ Chinese Language (for International students)
- ◇ Teaching Chinese as a Second Languages

MASTER'S PROGRAM

Mentorship systems Academic Credit System Quarter System:

Four quarters in a year (fall, winter, spring, summer)
10 weeks long plus two weeks for finals (except 4-week summer term)

Research-oriented with 10 world top 1% disciplines by ESI (2021):

Physics, Chemistry, Materials Science, Environmental Ecology, Engineering, Mathematics, Computer Science, Biology & Biochemistry, Social Science, Clinical medicine.

4 national key disciplines

Metallurgy
Fluid Mechanics
Mechatronic Engineering
Sociology

APPLICATION ELIGIBILITY

Non-Chinese citizen in good health with a valid passport
Bachelor degree graduation with good academic records (be prior to the admission date)

Supervisor Acceptance Letter as a preferred criterion

For programs taught in Chinese:

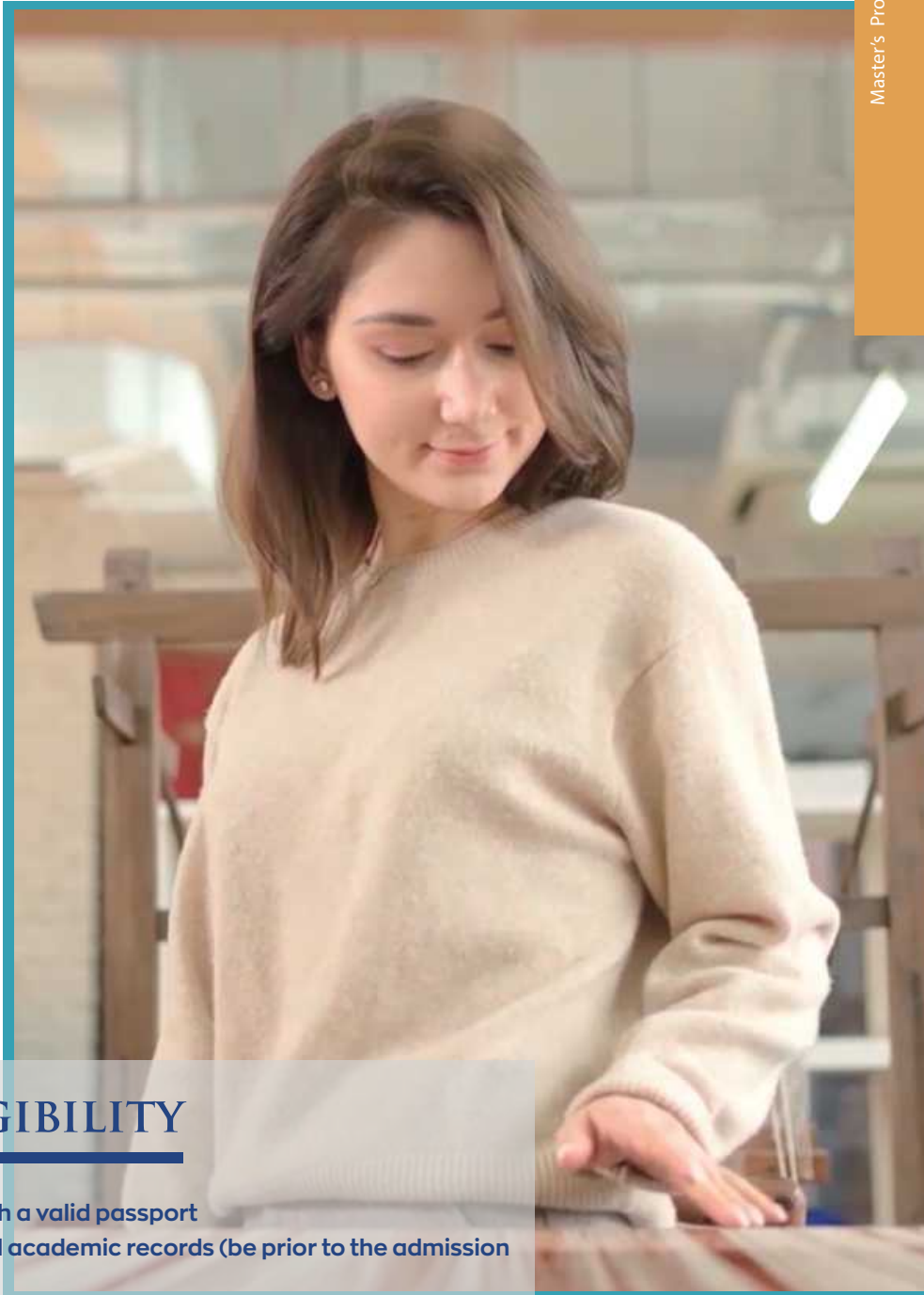
HSK 5 above 180 for Art;

HSK 5 above 180 for Science or Engineering;

HSK 5 above 180 for Economics or Management;

HSK 5 above 210 for Humanities.

For programs taught in English: students from non-English speaking countries are required to pass IELTS 6.5 or TOEFL IBT90.



Popular Majors

MTCSOL (Master of Teaching Chinese to Speakers of Other Languages)

This program aims to cultivate proficient skills of teaching Chinese as a second language, help non-native Chinese students to develop Chinese communication skill, Chinese teaching methods and cultivate the abilities competent to a variety of teaching tasks.

Main Research Fields: Teaching Chinese to speakers of other languages.

Materials Engineering

This subject has assembled a group of researchers with highly professional research skills and dynamic academic minds. Among them there are two academicians of engineering, 72 full professors (60 doctoral supervisor), 67 associate professors, and a large number of young scholars with doctoral degree. In the subject, advanced instruments and equipment including three dimensional atom probes are used and complete material research and development bases are also being built ranging from material preparation, processing, structure analysis to the physical properties test.

Main Research Fields: application performance of nuclear structural materials; texture forming its application in magnetic materials; grain boundary engineering (GBE) and its application.



Design Science

The program of Design Science aims to train senior professionals dedicated to the design art. Therefore students can master in the basic theory of art design and professional skills. They will be provided with the systematic training on public visual communication, urban artistic experience design, architectural artistic design as well as theoretical research.

Main Research Fields: Theory of art design, public visual communication, environmental art, mural art, digital interactive art, urban handicrafts

International Trade (Taught in Chinese or English)

This Program boasts rich teaching and research resources, with 9 professors, 10 associate professors. Nearly 70% full-time teachers have doctoral degree with overseas education background. Tutors of this program have participated in a series of national natural and social science foundation projects as well as Shanghai local enterprise projects. A number of high-level academic journals have been published.

Main Research Fields: International trade theory and policy, trade policy measures and effects, association study of trade policy and industrial policy.

Corporate Management (Taught in Chinese)

This major aims to cultivate students to be proficient in management theory, management practices, develop rich professional knowledge and theory application ability as well as international vision and local wisdom. Graduates with advanced enterprise management talents can be engaged in multinational companies, large and medium-sized enterprises as intermediate and senior management personnel and can also be self-employed and work in the research, consulting, and teaching field.

Main Research Fields: Marketing management, Strategic management, Human resource management, Logistics management, Innovation and entrepreneurship Intellectual property management

GLMBA (Taught in English)

Shanghai University's Global Management Education Institute and MBA Center(SHU MBA) have established a unique "SHU MBA Model" with a mission of "developing outstanding whole-person and global-local talented people". This mission is represented by three essential talent building strategies including "whole-person" talents, "Global-local" talents and "Reliable Knowlligence" talents

Core Courses: Organizational Behavior and Performance, International Economic Environment, Corporate Finance, Contemporary Global Local Business Issue, Politics, Business and Entrepreneurship Plan.

Global Studies (China Studies) (Taught in English)

This program is designed to provide students with a multi-dimensional understanding of Chinese Business. This well-tailored, multi-disciplinary program focuses on all specific areas relevant to China. With relevant theories and up-to-date practical applications, the program aims to equip students with comprehensive perspectives on China, systematic knowledge of business practices and the ability to analyze changes in government policies and regulations that affect business operations in China.

Core Courses: overview of China, Chinese language, theories of global studies, China and Globalization, modern history of China, Foreign Relations of China.

List of Master's Programs

SCIENCE

College of Science

<http://www.scicol.shu.edu.cn>

- Mathematics
- Physics
- Chemistry
- Statistics (Science)

School of Life Sciences

<http://www.bio.shu.edu.cn>

- Biology(English-instruction is available)
- Biology(Chinese)

ENGINEERING

School of Computer Engineering & Science

<http://cs.shu.edu.cn>

- Computer Science & Technology

School of Communications and Information Engineering

<http://scie.shu.edu.cn>

- Circuits & Systems
- Electromagnetic Fields & Microwave Technology
- Communication & Information System
- Signal & Information Processing
- Electronic Information

School of Environmental and Chemical Engineering

<http://ece.shu.edu.cn>

- Chemistry Engineering & Technique
- Nuclear Science and Technology
- Materials and Chemicals
- Resources and Environment

School of Mechanics and Engineering Science

<http://www.ce.shu.edu.cn>

- Civil Engineering
- Mechanics

School of Mechatronic Engineering and Automation

<http://www.auto.shu.edu.cn>

- Mechanical Manufacture and Automation
(English-instruction is available)
- Mechatronic Engineering
(English-instruction is available)
- Mechanical Design and Theory
- Precision Instruments and Machinery
- Measurement Technology and Instruments
- Electrical Engineering
- Control Science & Engineering(English-instruction is available)
- Additive Manufacturing And Tissue Repair
- Mechanical Engineering
- Vehicle Engineering
- Electronic information

HUMANITY & SOCIAL SCIENCE

College of Liberal Arts

<http://cla.shu.edu.cn>

- Chinese Language and Literature
- Chinese History
- Specialized History
- Ancient Chinese History
- Modern and Contemporary Chinese History
- World History
- International Relations (International Relations and Diplomacy)
- International Relations(International Organizations and Governance)
- International Relations(International Development)
- Governance in Chinese and Global Perspective
- Cultural Heritage and Museum Studies

School of Foreign Languages

<http://shf.shu.edu.cn>

- English Language and Literature
- Japanese Language & Literature
- Foreign Linguistics & Applied Linguistics

School of Journalism and Communication

- Journalism & Communication
- Master of Journalism and Communication

School of Sociology and Political Science

<http://www.sociology.shu.edu.cn>

- Sociology
- Demography/Demology
- Folklore

Law School

<http://www.law.shu.edu.cn>

- Law(The Science of Law)
- The Science of Law
- Law(The Science of Law)(focus on china Commercial Law)

School of Social Sciences

<http://www.shkxy.shu.edu.cn>

- Philosophy

ARTS

Shanghai Academy of Fine Arts

<http://www.arts.shu.edu.cn>

- Artistic Theory
- Fine Arts Theory
- Design Science
- Architecture
- Fine Arts
- Art Design
- Digital Media Art (Taught in English)
- Philosophy

Shanghai Film Academy

<http://www.suftv.shu.edu.cn>

- Artistic Theory
- Computer Science and Technology(Direction of special effects and digital film)
- Drama and Film Studies
- Digital Creative Media

BUSINESS & MANAGEMENT

School of Economics

<http://www.soe.shu.edu.cn>

- International Trade (English-instruction is available)
- Finance
- International Business(English-instruction is available)

School of Management

<http://www.ms.shu.edu.cn>

- Corporate Management(English-instruction is available)
- Accounting
- Tourism Management
- Management Science & Engineering

SILC Business School

<http://www.silc.shu.edu.cn>

- Finance(English-instruction is available)
- Finance(Corporate Finance)
- Finance(Quantitative Finance)
- Finance(Cross-Border E-commerce)
- Accounting
- Accounting(International Accounting Standards and Information Disclosure)
- Accounting(Intelligent Accounting and Digital Management)
- Accounting(Management control and Innovation Management)
- Regional Economics
- Management Science and Engineering
- Corporate Management

Department of Library, Information and Archives

<http://www.tqd.shu.edu.cn>

- Library Science
- Library and Information
- Information Science
- Archive Science

MBA Center

<http://www.shumba.cn>

- Business Administration(Global Industry MBA)
- Business Administration(Global China MBA)
- Business Administration(Global Local MBA)

OTHERS

College of International Education

<http://www.cie.shu.edu.cn>

- Teaching Chinese as a second Languages

DOCTORAL'S PROGRAMS



Mentorship systems Academic Credit System Quarter System:

Four quarters in a year (fall, winter, spring, summer)
10 weeks long plus two weeks for finals (except 4-week summer term)

Research-oriented with 10 world top 1% disciplines by ESI (2021):

Physics, Chemistry, Materials Science, Environmental Ecology, Engineering, Mathematics, Computer Science, Biology & Biochemistry, Social Science, Clinical medicine

4 national key disciplines

Metallurgy
Fluid Mechanics
Mechatronic Engineering
Sociology

APPLICATION ELIGIBILITY

**Non-Chinese citizen in good health with a valid passport
Master degree graduation with good academic records (be prior to the admission date)
Supervisor Acceptance Letter as a preferred criterion**

For programs taught in Chinese:

**HSK 5 above 180 for Art;
HSK 5 above 180 for Science or Engineering;
HSK 5 above 180 for Economics or Management;
HSK 5 above 210 for Humanities.**

For programs taught in English: students from non-English speaking countries are required to pass IELTS 6.5 or TOEFL IBT90.

List of Doctoral Programs

SCIENCE

College of Science

<http://www.scicol.shu.edu.cn>

- △ Pure Mathematics
- △ Computational Mathematics
- △ Probability Theory & Mathematical Statistics
- △ Applied Mathematics
- △ Operational Research and Cybernetics
- △ Theoretical Physics
- △ Condensed Matter Physics
- △ Optics
- △ Radio Physics
- △ Physics
- △ Chemistry

ENGINEERING

School of Mechanics and Engineering Science

<http://www.ce.shu.edu.cn>

- △ Structure Engineering
- △ Mechanics

School of Mechatronic Engineering and Automation

<http://www.auto.shu.edu.cn>

- △ Control Science and Engineering
- △ Mechanical Engineering
- △ Electrical Engineering

School of Communications and Information Engineering

<http://scie.shu.edu.cn>

- △ Electromagnetic Field and Microwave Technology
- △ Communication and Information System
- △ Signal and Information Processing

ARTS

Shanghai Academy of Fine Arts

<http://www.arts.shu.edu.cn>

- △ The Artistic Theory
- △ Fine Arts Theory
- △ Design Science

Shanghai Film Academy

<http://www.suftpv.shu.edu.cn>

- △ Artistic Theory
- △ Digital Creative Media

School of Materials Science and Engineering

<http://www.mat.shu.edu.cn>

- △ Material Science & Engineering
- △ Metallurgical Engineering

School of Computer Engineering & Science

<http://cs.shu.edu.cn>

- △ Computer Science & Technology

School of Environmental and Chemical Engineering

<http://ece.shu.edu.cn>

- △ Environmental Science
- △ Environmental Engineering
- △ Environmental Chemistry
- △ Chemical Technology
- △ Biochemical Engineering
- △ Applied Chemistry

BUSINESS & MANAGEMENT

School of Economics

<http://www.soe.shu.edu.cn>

- △ Finance
- △ Industrial Economics
- △ International Trade
- △ Statistics and Quantitative Analysis

School of Management

<http://www.ms.shu.edu.cn>

- △ Intellectual Property Management
- △ Management Science & Engineering

Department of Library, Information and Archives

<http://www.tqd.shu.edu.cn>

- △ Information Resources Management

HUMANITY & SOCIAL SCIENCE

College of Liberal Arts

<http://cla.shu.edu.cn>

- △ Ancient Chinese Literature
- △ Modern and Contemporary Chinese Literature
- △ Chinese History
- △ World History
- △ Global Studies
- △ Creative Writing
- △ Chinese Language and Literature (International Chinese Language Education)

School of Sociology and Political Science

<http://www.sociology.shu.edu.cn>

- △ Sociology
- △ Demography/Demology
- △ Anthropology

School of Foreign Languages

<http://www.shf.shu.edu.cn>

- △ Language Culture and World Civilization

School of Journalism and Communication

- △ Journalism
- △ Communication

School of Social Sciences

<http://www.shkxy.shu.edu.cn>

- △ Ideological and Political Education

NON-DEGREE PROGRAMS



Intensive Chinese Program

- Two semesters a year, which begin at the end of February and the beginning of September;
- Six levels are placed: A level (Beginners), B level (Elementary), C level (Pre-Intermediate), D level (Intermediate), E level (Advanced), F level (Advanced)
- One level will be accomplished for each semester
- Twenty Chinese language lessons (45 minutes per lesson) will be given for each week;
- Completion with certificate.

DBIC Program (Do Business in China)

- Two sessions a year, which begin at the beginning of March and the beginning of September
- Comprehensive program taught in Chinese on “Chinese Business”
- Suitable for credit transfer to European and US education system;
- Emphasis on experiencing Chinese culture
- Completion with a certificate

Exchange Program

- Two sessions a year, which begin at the beginning of March and the beginning of September;
- SHU now provide four modules for incoming exchange students-Module of Chinese Language, Module of major Courses Taught in English(Business related), Module of Credit Courses Taught in English(DBIC), and Module of Major Courses Taught in Chinese for bachelor students. In addition, the Module of Major Courses Taught in Chinese for bachelor students is currently not open

Summer school

- Vivid and fruitful Chinese cultural courses
- Special lectures and cultural practice, experience and understand the essence of Chinese culture
- Explore China’s most famous paradise on earth and feel the charm of the water villages in the south of the Yangtze River.
- Tailor-made

Application Eligibility

- Non-Chinese citizens in good health; between 16 and 45 years old and have a valid foreign passport and a valid Chinese visa.
- With elementary education qualification.
- Exchange Program: Registered students at the university which has signed university bilateral relationship with Shanghai University

INTERNSHIP & CAREER SUPPORT



Internship & Career Support

Assist students by internship support service, including career consultation, and ongoing development, visa service, etc.



上海 | 自由贸易试验区临港新片区人才办
Shanghai Free Trade Zone (FTZ) Lingang New Area Human Resources Office



上汽集团
SAIC MOTOR



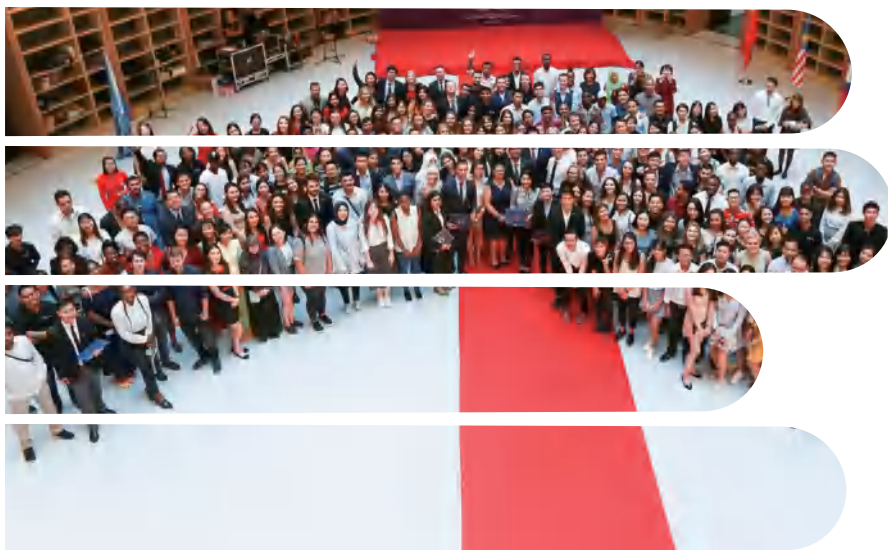
STARBUCKS



GLOBAL ALUMNI NETWORK

Shanghai University emphasizes on developing international alumni activities and maintaining global alumini network.Up till now, we have already established Tokyo, Vietnam and U.K. Alumini Association etc.

LIFE IN SHU



On-campus Accommodation

Safe, clean and comfortable dorms;

A variety of rooms including single room, double room and suite to satisfy individual needs;

Equipped with air-conditioners, private bathroom,

Internet; public kitchen;

Laundry facilities are located in the building;

Close to the dining halls where Chinese dish and

Muslim food are served.

24 hours monitoring system

Student support service

Efficient and timely service for international students is provided from the moment of contact;

Always listen to your questions and concerns.

Please feel free to inquire us in the office or online. Staff can provide multi-language aid and support;

Great support for Visa, Insurance, Health and psychological counseling, and so on.

We have security regulations, systems and practical safety advice to help keep you and your property safe.

More information refers to International Students Service Center: <http://www.issc.shu.edu.cn/>

Student Organizations and Activities

International Student Ambassadors (ISA): It provides service for our international employees and students. This is also an excellent platform for the international students to participate in SHU's international process.

International Student Union (ISU): A great way to enrich your experience by joining the abundant activities including the International Cultural Festival, parties, volunteer activities and excursions.

Global Home Association (GHA): Be familiar with and adapt to the new environment quickly by making a new Chinese friend in a platform for Inter-cultural communication. Welcome to join in the Buddy project, coffee hour, and Fun in Shanghai.

ADMISSION

Requirements

Non-Chinese citizen in good health with a valid passport;

Applicants studying for a bachelor's degree should have obtained high school diploma;

Applicants studying for a Master's degree should have obtained bachelor's degree;

Applicants studying for a Doctoral degree should have obtained Master's degree.

Language ability

● Chinese-taught programs:

HSK 5 above 180 for Art;

HSK 5 above 180 for Science or Engineering;

HSK 5 above 180 for Economics or Management;

HSK 5 above 210 for Humanities.

● English-taught programs:

TOFEL scored 90 or IELTS scored above 6.5

Important dates

Degree Programs

Application time: From December, 2021 to June 30th, 2022.

Registration time: The end of August or the beginning of September in 2022

Procedures

● Step1. Login the website (<https://apply.shu.edu.cn>), and register.

● Step2. Choose the program, and upload the required documents.

● Step3. Wait for the approval.

Supporting documents

Documents

Undergraduates

Programs

- △ Passport copy
- △ ID photo
- △ Selfie video
- △ Highest Degree Certificate and Official Transcript
- △ Language Proficiency Certificate
- △ Statement of Financial Support
- △ Guarantee Statement (age under 18)
- △ Certificate of No Criminal Record

Postgraduates

- △ Passport copy
- △ ID photo
- △ Selfie video
- △ Highest Degree Certificate and Official Transcript
- △ Language Proficiency Certificate
- △ Statement of Financial Support
- △ Two Letters of Recommendation with Signature
- △ Supervisor Acceptance Letter
(not for all programs, details please refer to website)
- △ Study Plan or Research Proposal in China
- △ Certificate of No Criminal Record

Non-degree programs

- △ Passport copy
- △ ID photo
- △ Highest Degree Certificate and Official Transcript
- △ Statement of Financial Support

Note: 1.For specialized requirements please refer to departmental standards on <https://apply.shu.edu.cn>.
2. DBIC Program requires higher education qualification or related working experience.

SCHOLARSHIPS AND FEES

Scholarships

We provide various kinds of scholarships for new international students as follows:

Chinese Government Scholarship (CSC): www.csc.edu.cn

Shanghai Government Scholarship (SGS): http://edu.sh.gov.cn/study_cn/

Confucius Institute Scholarship (CIS): www.cis.chinese.cn

Shanghai University Scholarship: <https://apply.shu.edu.cn/>

School Fees

Application fee	—	CNY500
Tuition fee	—	Chinese Language Program CNY 9900 (one semester)
	—	Bachelor Program CNY 21000-32000 (one academic year)
	—	Master Program CNY 26000-59000 (one academic year)
	—	PhD Program CNY 27000-42000 (one academic year)
International Insurance	—	For half a year CNY400 For one year CNY800
Textbook and Supplies	—	CNY 300 per semester

Chinese visa cost

Chinese Entrance visa application fee varies from country to country.

Medical Examination fee in Shanghai CNY460-600

Visa extension fee: CNY 420-700 per year

Resident Permit-study application fee CNY 400-800 per year

Accommodation fee

Living on campus:

Single room CNY 140 per night

Double room CNY 70 per night

Four-bed room (limited) CNY 35 per night

Living off campus

One-bedroom apartment CNY 3000-4000 per month

Two-bedroom apartment CNY 5000-6000 per month



Contacts

International Students Admissions Office

College of International Education, Shanghai University

Add.:

Baoshan Campus: No. 99 Shangda Road, BaoShan District, Shanghai
200444, China

Yanchang Campus: No.149 Yanchang Road, Jing'an District, Shanghai
200072, China.

Tel.: +86-21-66136615

Application Website: <https://apply.shu.edu.cn>

For more information, please scan our QR Code, or send e-mails as below:



Study at SHU

Degree Programs: apply1@oa.shu.edu.cn apply9@oa.shu.edu.cn

Tailored Program: apply2@oa.shu.edu.cn

Credit Program (DBIC): apply3@oa.shu.edu.cn

Exchange Programs: apply4@oa.shu.edu.cn

Intensive Chinese Program: apply6@oa.shu.edu.cn

Scholarships: apply8@oa.shu.edu.cn

Statistics stipulated in this prospectus remain valid to Aug.30, 2020. For enrollment information and charging standards, please refer to the relevant regulations made by Shanghai University, Shanghai University may adjust the enrollment policy and charging standards at any time without prior notice. Please refer to the official website for the latest information.

/Designed by Heng Yuan/